

MTC

MODALI TRADING COMPANY (PTY) LTD

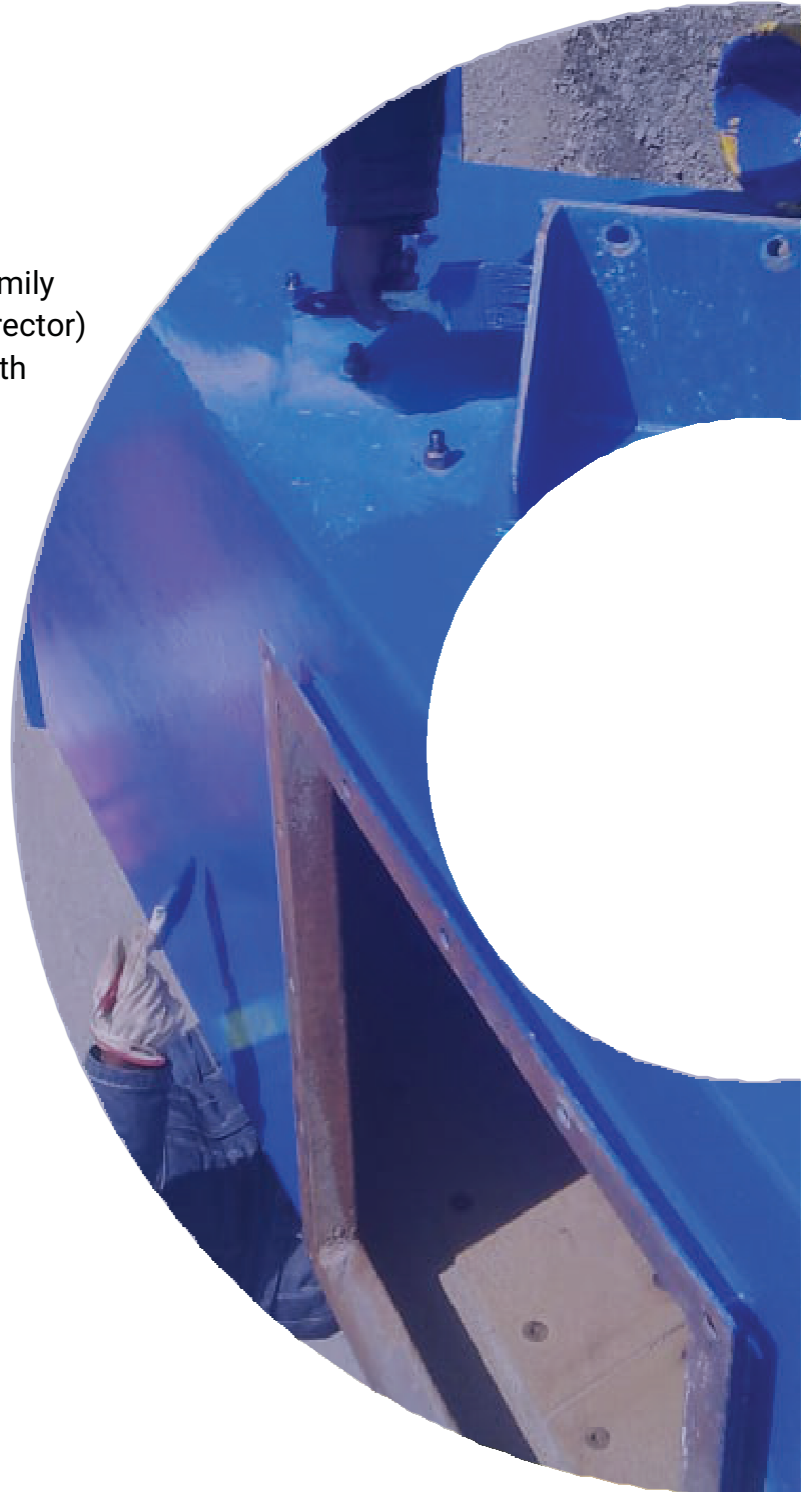


MODALI
TRADING
COMPANY

WELCOME TO MTC PROFILE

Modali Trading Company (Pty) Ltd is registered company that was established in 2012 with the purpose of supplying and promoting labour localisation in Lesotho and it is owned by the family members namely Mots'ehi Daniel Lithakong (Director) Mampholle Lithakong and Mpholle Lithakong both shareholders.

The company is originated and situated in the district of Botha-Bothe, (physical address indicated above).



OUR OBJECTIVE

Modali Trading Company (Pty) Ltd has short-, medium-, and long-term objectives such as contributing to Lesotho's economy by offering product and service, temporary and full time employment to the citizen of the kingdom as well as business environment particularly in the mining industry in the short and medium term. However, it is within the scope of the company to extend its service and product to other industries such as construction, manufacturing all kinds of steel and energy in the long run. Moreover, being a recruitment hub for the mines and construction companies in the country of which it had been achieved since we have experienced artisans employed in the mining sector and construction without affecting the provision of outstanding service to our clients. Employed by other mines, 13 were employed by Minopex Lesotho, 5 Fitters, 4 Boilermakers, 3 Instrumentation Technicians and 1 Electrician. At the moment the company has about 35 employees of which 15 of them are on fulltime basis while the others obtain temporary employment as the company is engaged in projects either Minopex Lesotho (Pty) Ltd, Letseng Mine, CMS, and other Mines such as Mothae and Lqhobong and by so doing, it assists many unemployed citizens.



OUR VISION

Modali Trading Company envisions contributing to Lesotho's economy by enhancing the lives of citizens through job creation and extending its services to other industries and responding to the needs of the market.



At the moment the company has about 35 employees of which 15 of them are on full time basis while the others obtain temporary employment as the company is engaged in projects either Minopex Lesotho (Pty Ltd, Letseng Mine, CMS, and other Mines such as Mothae and Liqhobong and by so doing, it assists many unemployed citizens.

MISSION STATEMENT

Modali Trading Company (MTC) is the company dedicated to providing high quality product and service that satisfy the needs of the customer with highly motivated and experienced workforce while on the other hand expecting a fair return from the investment.



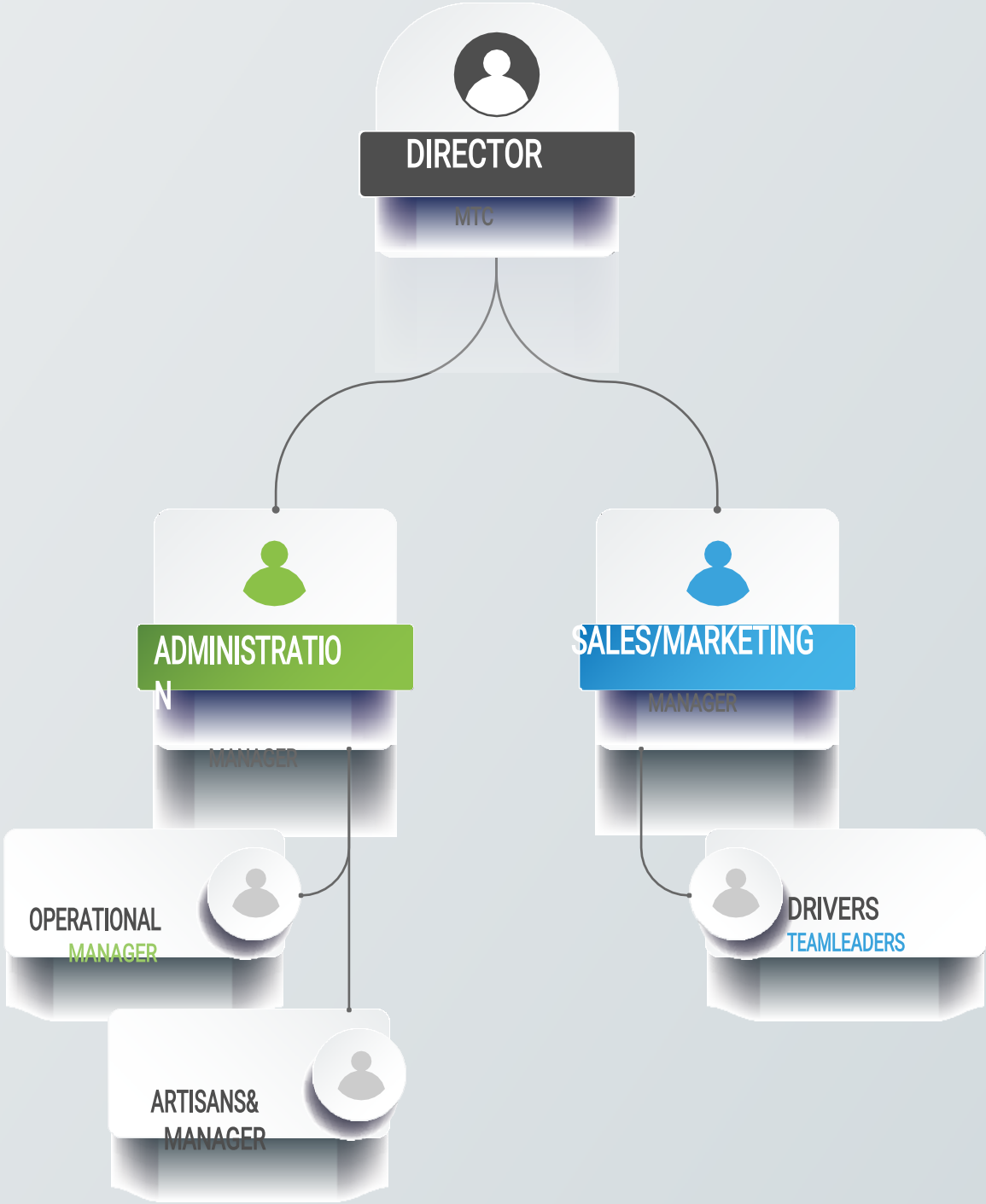
At the moment the company has about 35 employees of which 15 of them are on full time basis while the others obtain temporary employment as the company is engaged in projects either Minopex Lesotho (Pty Ltd, Letseng Mine, CMS, and other Mines such as Mothae and Liqhobong and by so doing, it assists many unemployed citizens.

SAFETY COMMITMENT

Safety and the wellness of the labour force are at the core of the company values and safety standards are highly applied while on the other hand strives for excellence and ensuring satisfied clients through motivated and dedicated labour force. For any accident that might occur, our workforce and motor vehicles are covered under public liability, workman's compensation, and fully comprehensive policy respectively.

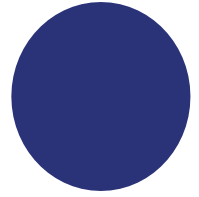


ORGANIZATIONAL STRUCTURE



For the company to carry out the project of supply and delivery of goods and services, duties and responsibilities are shared among the personnel in the following manner:

OUR EXPERIENCE



ModaliTradingCompany(Pty) Ltd participated in the building of Kao plant whereby it supplied beams and columns and provided among other artisans such as Boilermakers, Fitters and Shutter hand to StormMountain Diamond to do the fabrication of steel structure, chutes, underpants, etc in 2012/2013 It has also provided the same service in the extension of Lihobong Plant in 2012/2013 including weekly maintenance of both plants as well as attending 5-days shutdown at Lihobong Mining Development Company (LMDC) in April 2017. We also assisting Minopex at Lets'eng Diamond Mine with maintenance, both shift A and shift B for 10/4 shift, 5/2 shift that support engineering shift with daily activities and any plant breakdown where we are called within a short notice, as well as shutdown under Minopex Lesotho and Ensersa Pty Ltd in the improvement of PCA Project whereby we provide them with materials and artisans such as Boilermakers, Fitters, Electricians, Instrumentation Technicians, builders, carpenters, Painters, etc depending on their needs. We also build school and stone pitching in 2017/18 financial year at Mekhokhong where we were contracted by Max & Sons Holdings (Pty) Ltd.

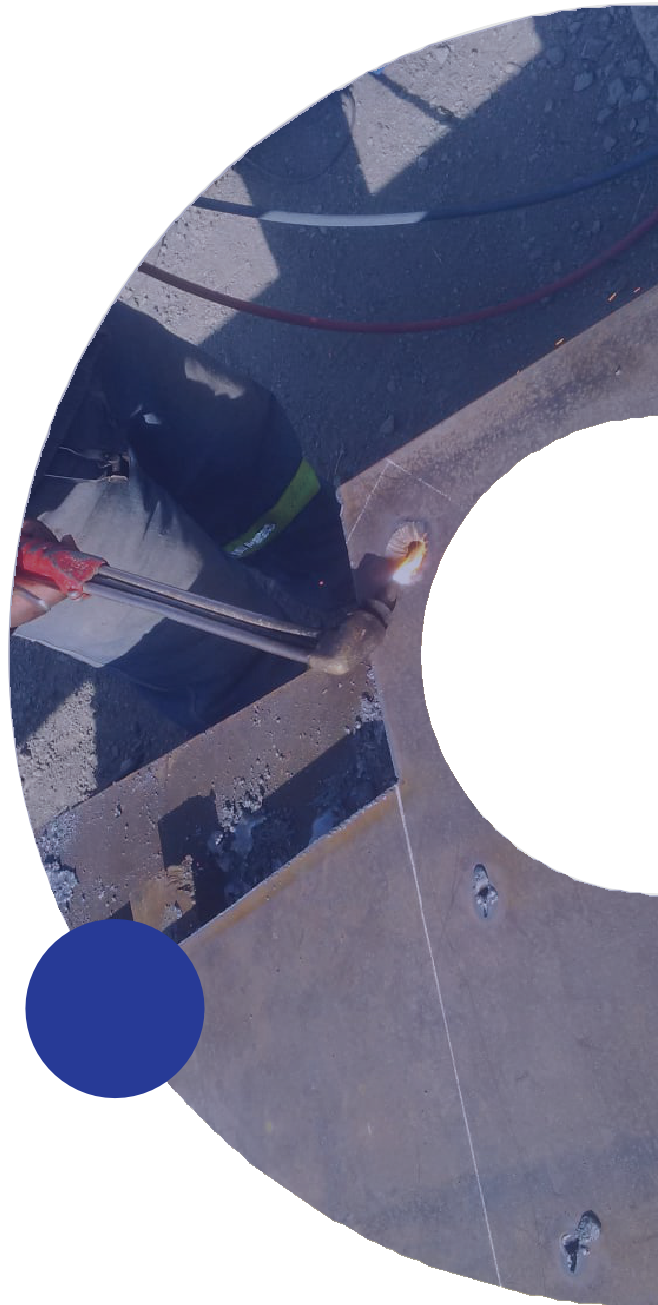


OUR SERVICES



Boilermakers

- Cut/Change warnliners.
- Weld cracked chutes.
- Replace Missing Bolts in the Chutes.
- Fabricate new chutes and distance pieces.
- Inspection & Maintenance of tanks.
- Inspection and maintenance of pipes.
- Fabrication of new structures.
- Modification of old chutes & Structures.
- Fabrication of Tool-boxes.
- Fabrication of cat ladders.
- Fabrication of trailers.
- Maintenance of Diamond Plants and Conveyors.
- Structural integrity.
- Fabrication and installation of Diamond Recovery Security Doors.



Fitters

- Inspection & Maintenance of screens
 - Gross members • Spray bar pipes
 - Stringers & Hark bolts
- Inspection & Maintenance of vibrating grizzly (VGF) bar
 - Gross members • Boltson VGF
 - Bars
- Inspection & Maintenance of apron
 - Replace flites • Replace pulley
 - Grease bearings
- Inspection & Maintenance of Gearbox
 - Gearbox replacement • Alignments (e.g V belts)
 - Coupling • Oil Refills
- Inspection & Maintenance of Scrubber
 - Roller replacement • Alignments (e.g pulleys)
 - Scrubber Gearboxes • Scrubber Motors
- Inspection & Maintenance of Cone Crusher

MORE SERVICES



Conveyor Maintenance

- General inspection
- Replace worn idlers
- Scraper adjustment
- Replace worn skirting
- Align the belt
- Fabricate and replace roller stringers



Electrical Services

- Termination of spuntnik motors
- Termination of scrubber motors
- Termination of pump motors around the plant
- Termination of overhead cranes in the plant
- Termination of pull wire switches
- Termination of demagnetizing coils
- Termination of 3 phase wiring
- Termination of hydraulic power packs heater
- Termination of magnetic separator motors
- Installation & Fixing of lights at Conveyor belts via day night switches
- Replacing & Fixing robots
- Terminating cables from the plant to the MCCs
- Locking out and Locking in on the motor Control Center(MCC) Panels



MORE SERVICES



Instrumentation

- Inspect and offset all pressure transmitters
- Remove 2 fines cyclones pressure transmitters to all cyclones
- Inspect, removing and replacing the pressure transmitters
- Clean and offset all cyclones DMS, water and slim pressure transmitters
- Repair open limit of 251 valve and rectify faults
- Inspect, Clean and calibrate conveyor belts



Painters

- Spray painting of structures after fabrication



Builders

- Construction of any building based on the client's specification



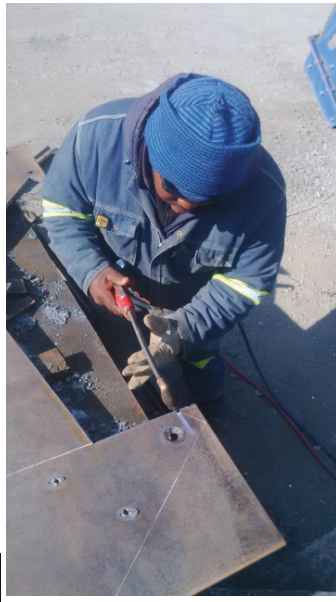
PROJECT PORTFOLIO

As part of the project we have performed the following:

- Structural repairs for both Letseng Diamond Mine Plant1 and Plant2
- Fabrication of the cubicles
- Fabrication of trouser leg chute
- Fabrication of the platform in front of cyclones and magnetic separator at plant2
- Fabrication of craw beam at Tomra plant
- Fabrication of platform to treat sputnik of secondary screen at plant 1
- fabrication of platform around VGF at PCA
- fabrication of plant2 towersteps to walkway
- fabrication and install tower No.1 door
- fabricationandinstallationofcatladdersonconveyor
- fabrication of CV belts stands
- fabrication and installation of coarse flood boxes
- Modification of recovery water tank sum
- Installation of ducting
- Fabrication and painting of gas cylinder canopy
- Over Christmas shutdown 48 hours
- PCA improvement under Ensersa(Pty)Ltd with engineering expertise
- Design,fabrication of fuel station pumps canopies to protect them from blasting
- Build school and stone pitching in 2017/18 financial year at Mekhokhong PrimarySchool



MTC GALLERY



OUR REFERENCES

LiqobongMiningDevelopmentCompany(LMDC) Name: Ernest Duplessis

Position:Engineering Manager

Emailaddress:eduplessis@liqhobong.co.ls

MinopexLesotho(Pty)Ltd Name:

Peete Makhabane

Position:EngineeringForeman

Emailaddress:makhabane.peete@minopex.com

Contactnumber:+26658881106

LetsengMine(Pty)Ltd

Name: Tsebo Molapo

Position:Manager

Emailaddress:Molapot@letseng.co.ls

Contactnumber:+26657799265/59596188

MaxandSonHoldings(Pty)Ltd Name:

Moeketsi Makara Position: Director

Contactnumber:+26659663859





MODALI TRADING COMPANY (PTY) LTD

CONTACT US

Phone: +266 59717130
+266 58923505

Email: info@modalitradingcompany.com

Phaphama
P.O.Box 227
Butha-Buthe 400